

# Integrity Operating Window using



# The Limits for the IOW can be managed centrally with an audit trail of the changes

The screenshot displays a web-based interface for managing process limits. At the top, there are buttons for 'Add Limit Group' and 'Edit Limit Group'. On the left, a sidebar lists various limit groups: Utilities Limits, HSSE Limits, OMC Limits, ODP-P Limits, ODP-D Limits, Site Effluent, and IOW (which is currently selected and highlighted in blue). Below the sidebar is a pagination control showing page 1 of 10 items.

The main content area is titled 'Limits Group Summary: IOW' and contains a table with the following data:

DashBoard/View	Description	TagName	LowLimit	HighLimit	Comment
MPBH_IOW	BFW RESIDUAL OXYGEN	MPBH_500Q001.PV.Value	10	20	
MPBH_IOW	BFW PH CONTROL	MPBH_500Q002.PV.Value	9.2	9.7	
MPBH_IOW	BOILER SHELL LEVEL CTL	MPBH_501L001.PV.Value	35	75	
MPBH_IOW	SHELL WATER CONDY	MPBH_501Q001.PV.Value	0	100	
MPBH_IOW	SHELL WATER PH CONTROL	MPBH_501Q002.PV.Value	9.5	10.5	
MPBH_IOW	STEAM CONDUCTIVITY	MPBH_501Q003.PV.Value	0	100	
MPBH_IOW	STACK OXYGEN	MPBH_501Q004.PV.Value	0	2.5	
MPBH_IOW	MP STEAM TO HEADER	MPBH_501T002.PV.Value	300	340	
MPBH_IOW	STACK TEMPERATURE	MPBH_501T003.PV.Value	0		
MPBH_IOW	STEAM TO VENT AT STARTUP	MPBH_501T005.PV.Value	250		

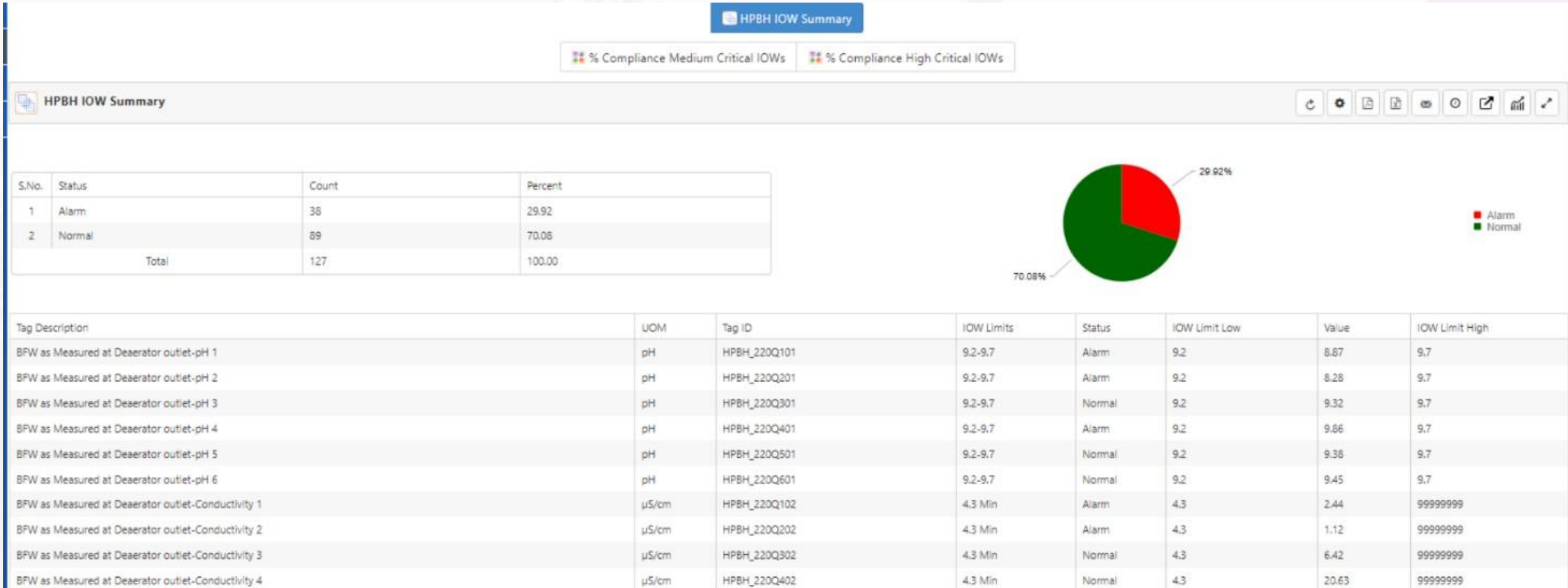
A context menu is open over the 'MP STEAM TO HEADER' row, providing the following actions: Edit, Audit Trail, Update In LimitGroup Views, Show References, Status, Quick Trend, and Go to View. At the bottom right of the table, there is a pagination indicator showing '1 - 10 of 20 items'.

# Based on the limits defined, alerts can be sent on email / SMS

The screenshot displays the 'Refinery Performance Monitoring System' interface for 'ABC Oil Company'. The top navigation bar includes a search icon, home, settings, help, and a 'Reports' user profile. Below this, a secondary navigation bar contains tabs for 'Plant Status', 'Plant Status Data', 'Throughputs', 'ROR Summary', 'KPIs', 'Notifications' (selected), 'Reports', 'CY Highlights', 'Flare', 'Miscellaneous', and 'Overall EII'. The main content area is titled 'Overview Notifications' and features a search bar and several control icons. It lists four active notifications, each with a yellow background and a warning icon:

- DCU\_UnitStatus - START**: Activated 02-Dec-2022 10:38. Message: STARTED. Criteria: T1>80000 && T2>80000. Notify To: Process Engineer DCU... (ON). Escalate To: (ON). IsEnabled: ON. Actions: Show Related, Show Similar.
- DCU Throughput - LOW**: Activated 04-May-2023 12:39. Message: Message: DCU Throughput (KTPD) Data: 13.12 < 16.338 RPMS-. Notify To: Process Engineers DC... (ON). Escalate To: (ON). IsEnabled: ON. Actions: Show Related, Show Similar.
- DCU Heater 2 COT - HIGH**: Activated 04-May-2023 13:09. Message: Message: DCU Heater 2 COT Data: 585.033 > limit 505 RPMS-. Notify To: Process Engineers DC... (ON). Escalate To: (ON). IsEnabled: ON. Actions: Show Related, Show Similar.
- DCU VR Feed Distillation 5% - LOW**: Activated 13-Apr-2023 19:44. Message: Message: VR Feed Distillation 5% (degC) Data: 477 is < limit. Notify To: Process Engineers DC... (ON). IsEnabled: ON. Actions: Show Related, Show Similar.

# Real-time assessment / health against the IOW can be viewed centrally



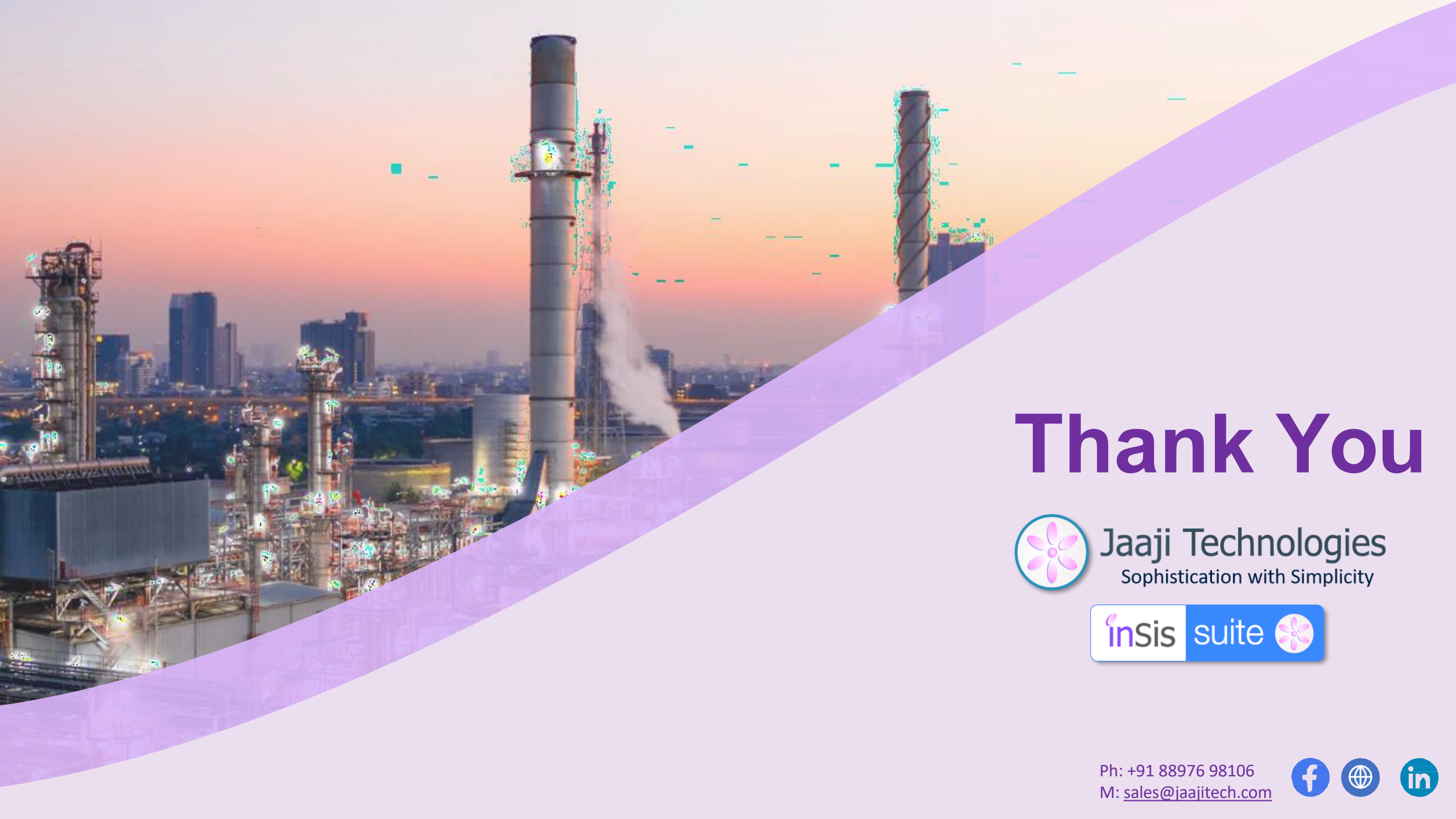
# Compliance to the IOW can be tracked centrally to drive corrective actions

HPBH IOW Summary

% Compliance Medium Critical IOWs
% Compliance High Critical IOWs

% Compliance Medium Critical IOWs

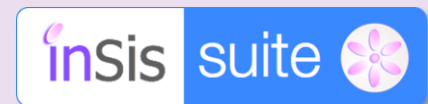
HPBH Medium Critical IOW					
Tag Description	UOM	Tag ID	IOW Limits	% Compliance Last 24hours(<80%)	% Compliance Last 7days(<90%)
Secondary Superheater outlet steam temperature 1	Deg C	HPBH_221T017	500-538	0.00	0.00
Secondary Superheater outlet steam temperature 2	Deg C	HPBH_222T017	500-538	91.39	15.93
Secondary Superheater outlet steam temperature 3	Deg C	HPBH_223T017	500-538	63.15	9.03
Secondary Superheater outlet steam temperature 4	Deg C	HPBH_224T017	500-538	100.00	100.00
Secondary Superheater outlet steam temperature 5	Deg C	HPBH_225T017	500-538	91.05	98.72
Secondary Superheater outlet steam temperature 6	Deg C	HPBH_226T017	500-538	0.00	0.00
Secondary Superheater outlet header skin temperature 1	Deg C	HPBH_221T006	538 Max	100.00	100.00
Secondary Superheater outlet header skin temperature 2	Deg C	HPBH_222T006	538 Max	99.93	99.60
Secondary Superheater outlet header skin temperature 3	Deg C	HPBH_223T006	538 Max	100.00	100.00
Secondary Superheater outlet header skin temperature 4	Deg C	HPBH_224T006	538 Max	100.00	100.00
Secondary Superheater outlet header skin temperature 5	Deg C	HPBH_225T006	538 Max	100.00	100.00
Secondary Superheater outlet header skin temperature 6	Deg C	HPBH_226T006	538 Max	100.00	100.00
Primary Superheater outlet header skin temperature 1	Deg C	HPBH_221T001	477 Max	100.00	100.00
Primary Superheater outlet header skin temperature 2	Deg C	HPBH_222T001	477 Max	100.00	100.00
Primary Superheater outlet header skin temperature 3	Deg C	HPBH_223T001	477 Max	100.00	100.00
Primary Superheater outlet header skin temperature 4	Deg C	HPBH_224T001	477 Max	100.00	100.00
Primary Superheater outlet header skin temperature 5	Deg C	HPBH_225T001	477 Max	100.00	100.00



# Thank You



**Jaaji Technologies**  
Sophistication with Simplicity



Ph: +91 88976 98106  
M: [sales@jaajitech.com](mailto:sales@jaajitech.com)

